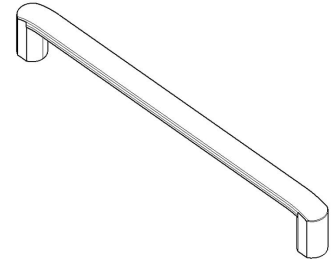


MODEL	0241 ROMA						
REFERENCE	0241320Z23						
CUSTOMER REFERENCE							
DESCRIPTION	ROMA - CC320L335mm brushed nickel handle						
	ROMA - Tir. níquel cepillado CC320L335mm						
MATERIAL	ZINC ALLOY						
FINISH	BRUSHED NICKEL						
LENGTH	335,00	WIDTH	30,00	HEIGHT	14,00	DIAMETER	0,00
UNIT WEIGHT	NET	0.23 kg		GROSS	0.24 kg		
HOLES	TYPE		NUMBER OF HOLES		CC DISTANCE		
	M4		2		320 mm		
COMPONENTS							
REFERENCES	UNITS		REFERENCES		UNITS		



PACKAGING		VIEFE STAND									
LABEL				BOX							
EAN 13		EAN 14			INNER BOX	OUTER BOX					
BARCODE	8436531777999	BARCODE	18436531777996	PIECES	25	50					
POSITION	POLYBAG	POSITION	INNER BOX	DIMENSIONS	35,6x23,5x10,2cm	36,8x24,8x22,2cm					
				GROSS WEIGHT	6.0 kg	12.2 kg					
				SCREWS							
				TYPE				M4x25			
				UNITS				2			

CONTROL POINTS AND REQUIREMENTS
<ul style="list-style-type: none"> - The handles have passed the salty spray test, DIN EN ISO 9227 (5% saline solution/48 hours). Test procedure "Neutral Salt Spray Test" (NSS). - Dimensions according to drawing. - Color finish according color samples signed by VIEFE.