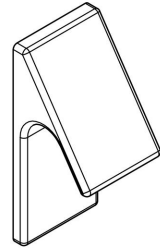



MODEL	0315 ZAPA						
REFERENCE	0315020Z11						
CUSTOMER REFERENCE							
DESCRIPTION	ZAPA - 20x45mm matt chrome knob						
	ZAPA - Pomo cromo mate 20x45mm						
MATERIAL	ZAMAK						
FINISH	MATT CHROME						
LENGTH	20,00	WIDTH	45,00	HEIGHT	19,40	DIAMETER	0,00
UNIT WEIGHT	NET	0.02 kg		GROSS	0.0296 kg		
HOLES	TYPE		NUMBER OF HOLES		CC DISTANCE		
	M4		1		- mm		
COMPONENTS							
REFERENCES	UNITS		REFERENCES		UNITS		



PACKAGING	VIEFE STAND									
LABEL				BOX						
EAN 13		EAN 14			INNER BOX	OUTER BOX				
BARCODE	8436531780739	BARCODE	18436531780736	PIECES	25	200				
POSITION	POLYBAG	POSITION	INNER BOX	DIMENSIONS	23x10,9x7cm	47,5x24x16cm				
				GROSS WEIGHT			0.74 kg	6.12 kg		
				SCREWS						
								TYPE		M4x25 + M4x22
								UNITS		1 + 1

### CONTROL POINTS AND REQUIREMENTS

- The handles have passed the salty spray test, DIN EN ISO 9227 (5% saline solution/48 hours). Test procedure "Neutral Salt Spray Test" (NSS).
- Dimensions according to drawing.
- Color finish according color samples signed by VIEFE.