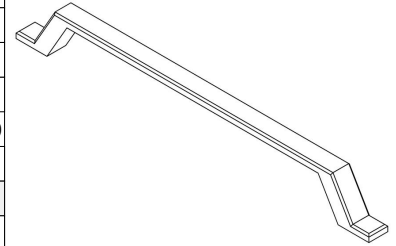


MODEL	0411 VERSO						
REFERENCE	0411192Z23						
CUSTOMER REFERENCE							
DESCRIPTION	VERSO - CC192L224mm brushed nickel hdle						
	VERSO - Tirador níquel cepillado CC192L224mm						
MATERIAL	ZAMAK						
FINISH	BRUSHED NICKEL						
LENGTH	224,00	WIDTH	26,00	HEIGHT	12,00	DIAMETER	0,00
UNIT WEIGHT	NET	0.095 kg		GROSS	0.111 kg		
HOLES	TYPE		NUMBER OF HOLES		CC DISTANCE		
	M4		2		192 mm		
COMPONENTS							
REFERENCES	UNITS		REFERENCES		UNITS		



PACKAGING	VIEFE STAND								
LABEL				BOX					
EAN 13		EAN 14			INNER BOX	OUTER BOX			
BARCODE	8436531788346	BARCODE	18436531788343	PIECES	25	100			
POSITION	POLYBAG	POSITION	INNER BOX	DIMENSIONS	24,8x23,5x10,2cm	48,3x26x22,2cm			
				GROSS WEIGHT	2.775 kg	11.3 kg			
				SCREWS					
				TYPE				M4x25	
				UNITS				2	

CONTROL POINTS AND REQUIREMENTS

- The handles have passed the salty spray test, DIN EN ISO 9227 (5% saline solution/48 hours). Test procedure "Neutral Salt Spray Test" (NSS).
- Dimensions according to drawing.
- Color finish according color samples signed by VIEFE.