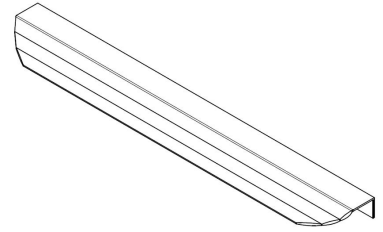


MODEL	0467 SKALA						
REFERENCE	0467256L30						
CUSTOMER REFERENCE							
DESCRIPTION	SKALA-Brushed matt handle CC256L350mm						
	SKALA - Perfil negro cepillado CC256L350mm						
MATERIAL	ALUMINIUM						
FINISH	BRUSHED BLACK						
LENGTH	350,00	WIDTH	48,20	HEIGHT	18,00	DIAMETER	0,00
UNIT WEIGHT	NET	0.108 kg		GROSS	0.093 kg		
HOLES	TYPE		NUMBER OF HOLES		CC DISTANCE		
	ø5.2		2		256 mm		
COMPONENTS							
REFERENCES	UNITS		REFERENCES		UNITS		



PACKAGING		VIEFE STAND							
LABEL				BOX					
EAN 13		EAN 14			INNER BOX	OUTER BOX			
BARCODE	8436531797096	BARCODE	18436531797093	PIECES	25	100			
POSITION	POLYBAG	POSITION	INNER BOX	DIMENSIONS	44x22x7cm	46x23x31cm			
				GROSS WEIGHT	2.325 kg	9.5 kg			
				SCREWS					
				TYPE			SPECIAL 15x3.5 BLACK		
				UNITS			2		

CONTROL POINTS AND REQUIREMENTS

- The handles have passed the salty spray test, DIN EN ISO 9227 (5% saline solution/48 hours). Test procedure "Neutral Salt Spray Test" (NSS).
- Dimensions according to drawing.
- Color finish according color samples signed by VIEFE.